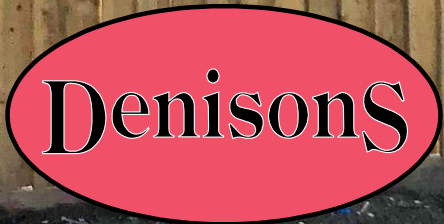




3 Beresford Gardens



3 Beresford Gardens

Christchurch, Dorset, BH23 3QW

£539,950

Denisons are pleased to offer for sale this three bedroom detached chalet bungalow situated in a quiet cu-de-sac. The property has been refurbished to a high standard throughout. Accommodation comprises of a brand new open plan kitchen/living area complete with brand new appliances, Quartz worktops, wine fridge, Kardean flooring and French doors that lead out to the new patio area and great size garden. Downstairs you will also find the master bedroom with a brand new en-suite shower room, another double bedroom and brand new family bathroom. All bedrooms benefit from brand new carpet. To the first floor there are two further bedrooms with Velux windows and a WC. Further benefits of this property include a garage, ample off road parking for multiple vehicles, brand new driveway, new boiler & radiators throughout, new fencing, being fully plastered & rendered. We strongly advise an early internal viewing to appreciate the accommodation offer and the the finish.



Hallway

Bedroom 1 15' 9" x 11' 3" (4.80m x 3.43m)

En-suite

Bedroom 2 12' 6" x 10' 0" (3.81m x 3.05m)

Family Bathroom

Kitchen/lounge/diner 12' 6" x 21' 9" (3.81m x 6.62m)

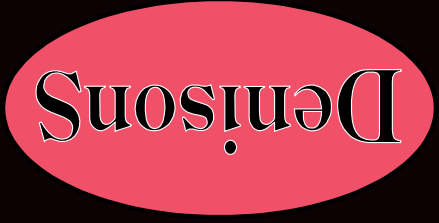
First Floor Landing

Bedroom 11' 11" x 9' 11" (3.63m x 3.02m)

Bedroom 4 6' 7" x 9' 11" (2.01m x 3.02m)

WC





Denisons for themselves and for the Vendors or lessors of this property, whose Agents they are, give notice that these particulars are produced in good faith, are set out as a general guide only and do not constitute any part of a Contract. No person in the employment of Denisons has any authority to make or give any representation or warranty whatever in relation to this property.

www.denisons.com

Mayfair
 Cashel House, London, W1U 3JT
0870 112 7099
mayfair@denisons.com

Christchurch
 12 Castle Street, Christchurch BH23 1DT
01202 484748
christchurch@denisons.com

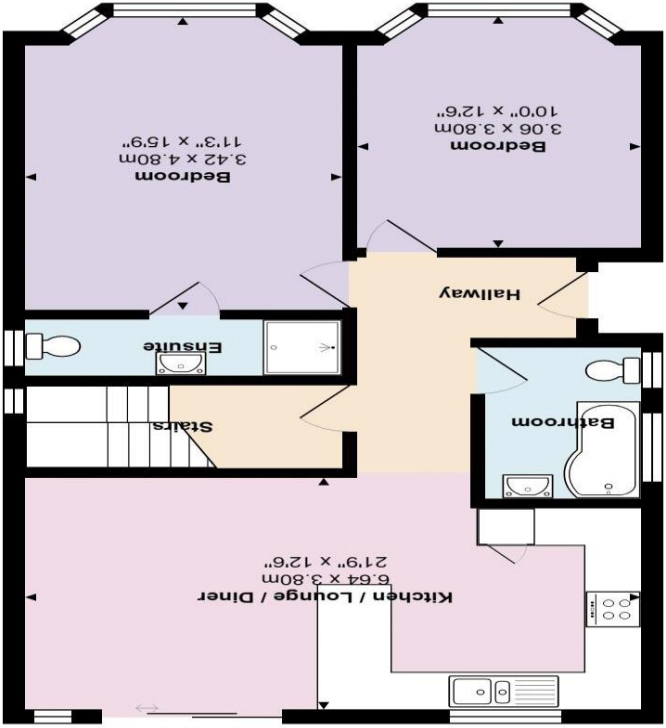


All measurements are approximate and for display purposes only

Total Area: 94.7 m² ... 1019 ft²



Ground Floor



First Floor

